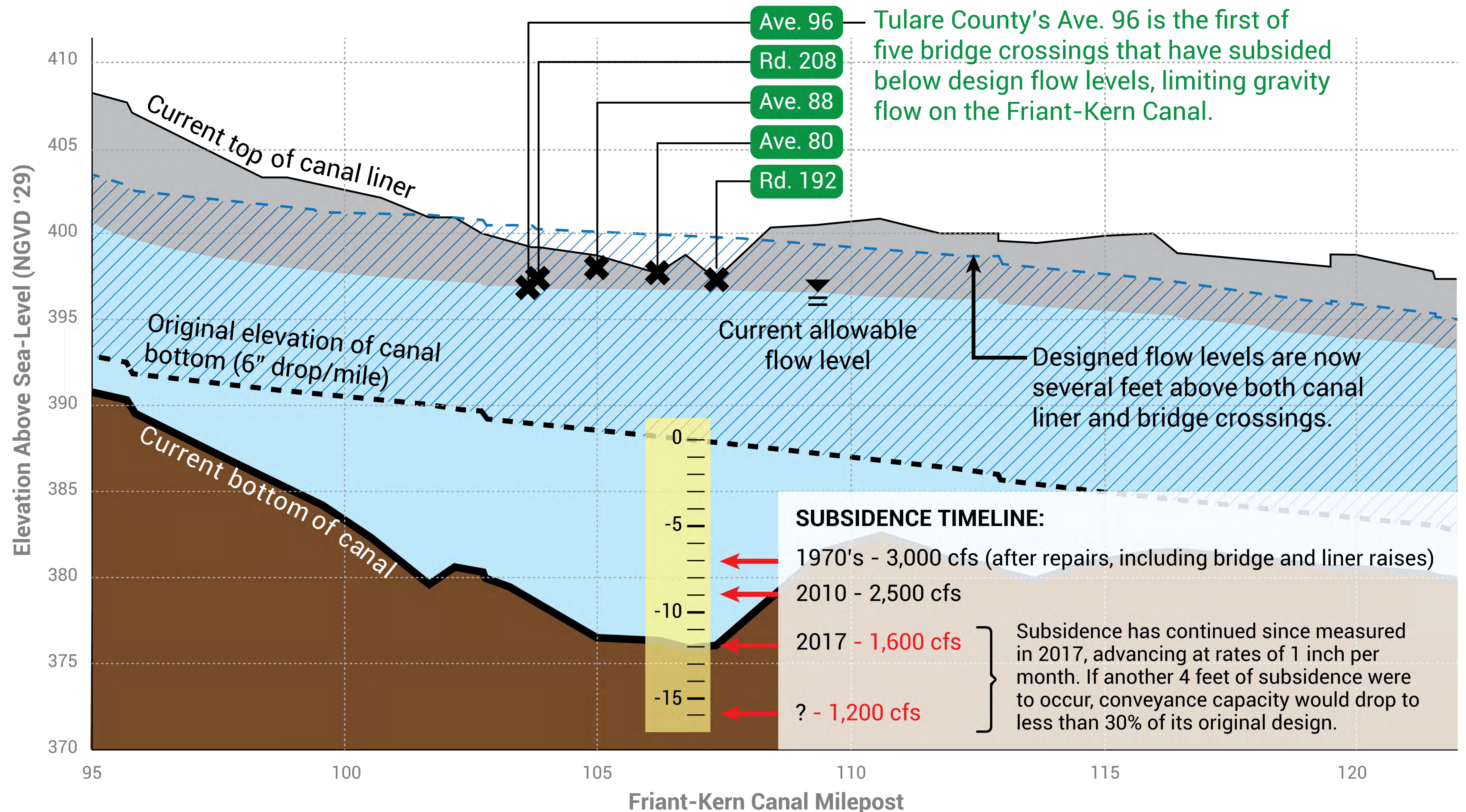
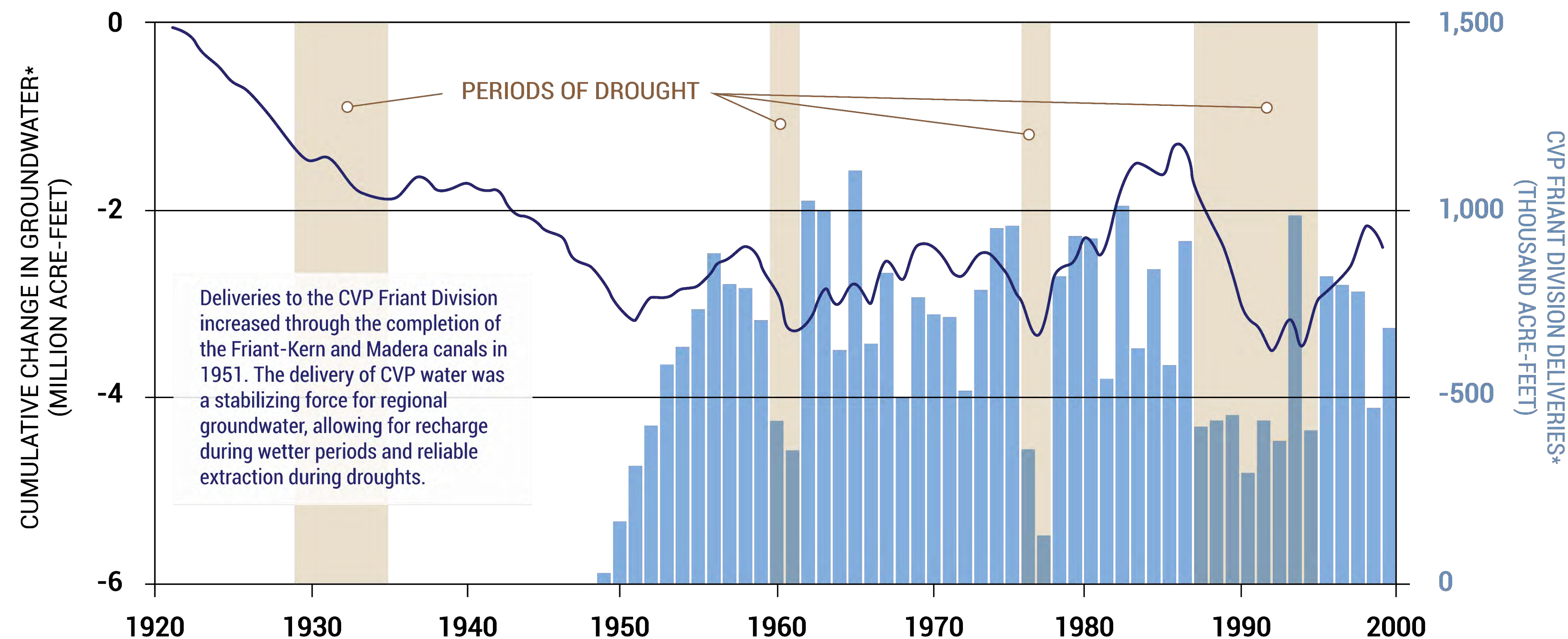


Friant-Kern Canal Subsidence

Friant-Kern Canal: Comparison of Current Conditions to Original Construction



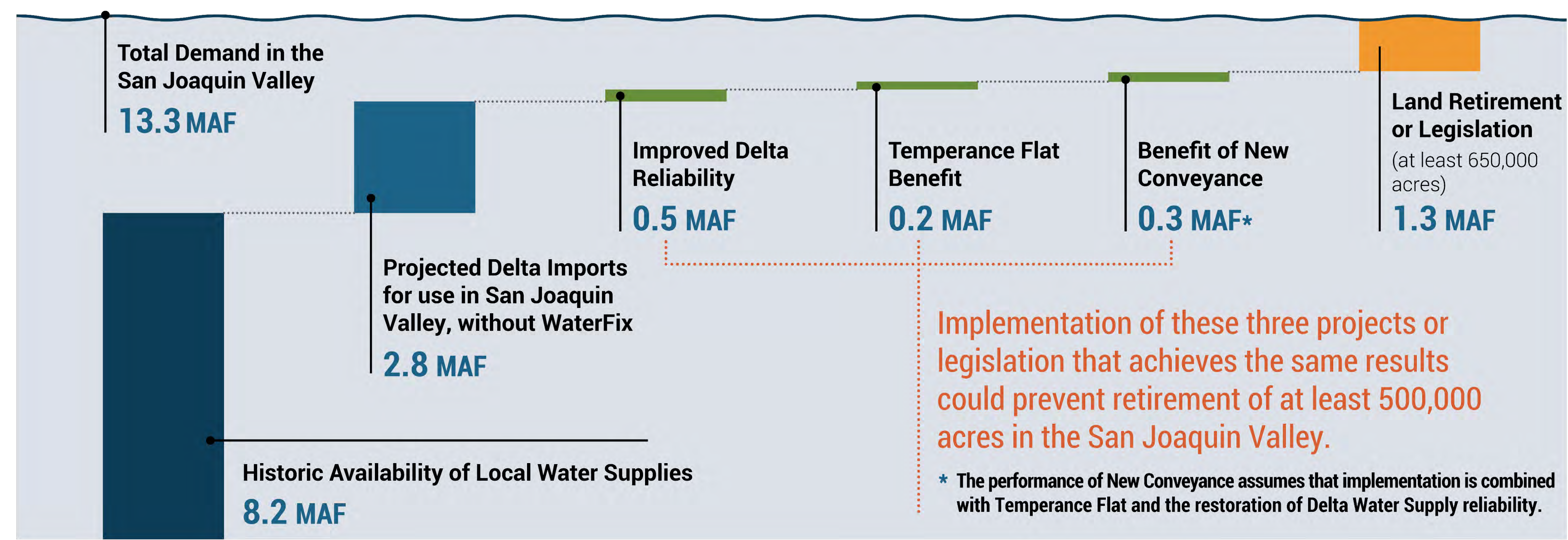
Regional Groundwater Stability

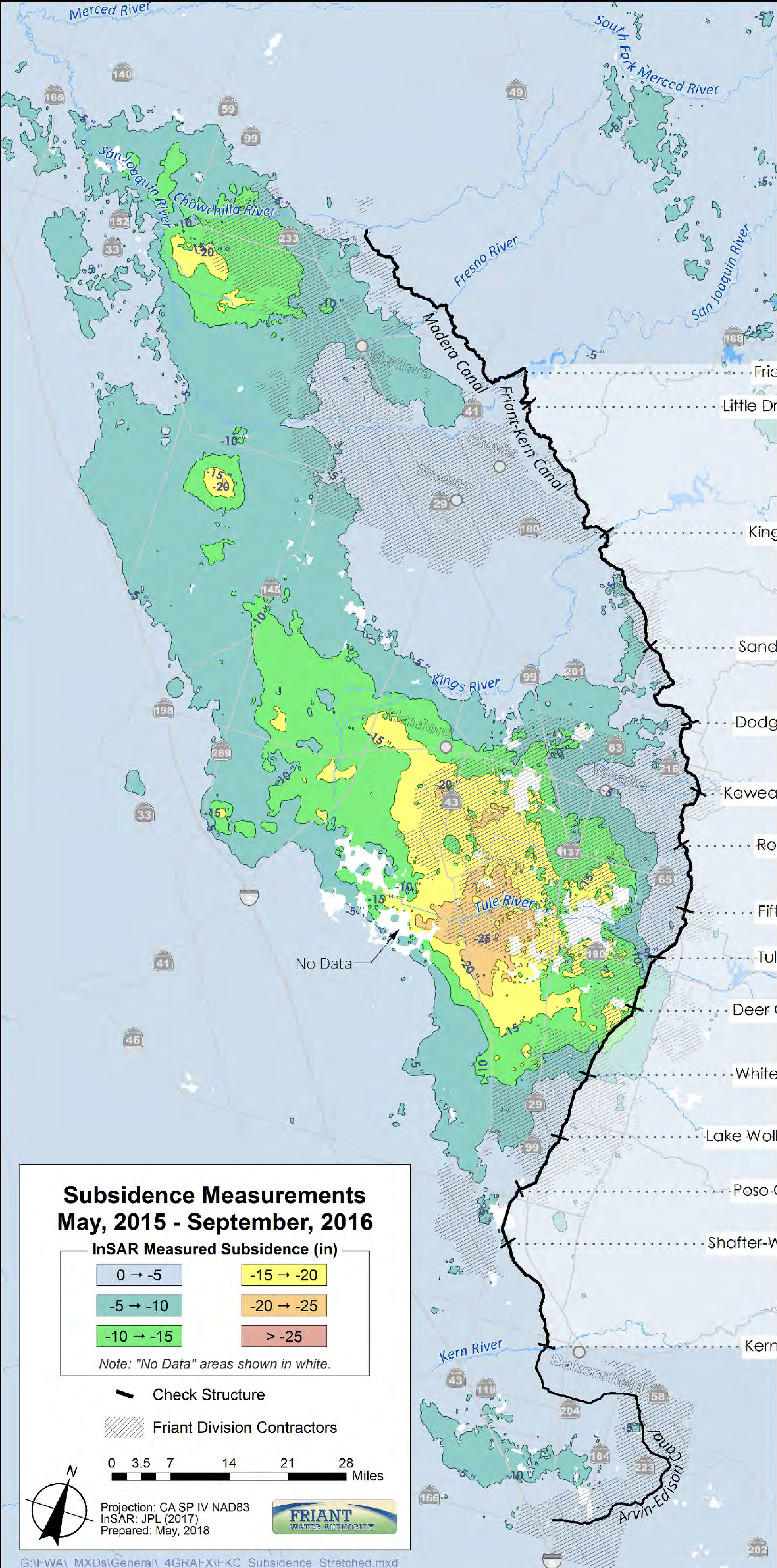


Water Deliveries to the Friant Division Kept Regional Groundwater Stable Through Multiple Cycles of Drought

*Conditions represented for eleven Friant Division contractors with early participation in the CVP, and collectively representing about half of the Friant Division (55-percent of Class 1 and 46-percent of Class 2 contracts). Information for the combination of conditions at: Delano-Earlimart Irrigation District (ID), Ivanhoe ID, Lindmore ID, Lower Tule ID, Porterville ID, Saucelito ID, Shafter Wasco ID, South San Joaquin Municipal Utility District, Stone Corral ID, and Tulare ID.

Closing the Gap:
Maximizing Our
Resources Portfolio to
Minimize Land
Retirement





Subsidence Measurements May, 2015 - September, 2016

InSAR Measured Subsidence (in)

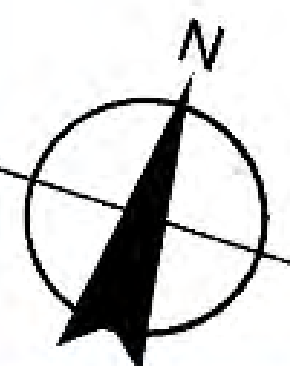
0 → -5	-15 → -20
-5 → -10	-20 → -25
-10 → -15	> -25

Note: "No Data" areas shown in white.

Check Structure

Friant Division Contractors

0 3.5 7 14 21 28 Miles



Projection: CA SP IV NAD83
InSAR: JPL (2017)
Prepared: May, 2018



Friant Dam (0.0)		
Little Dry Creek (5.5)		
	5,300	5,217
Kings River (28.5)		
		3,797
Sand Creek (46.0)	5,000	
		3,887
Dodge Ave. (61.0)		
		4,196
Kaweah River (71.3)		
		3,427
Rocky Hill (79.3)		
	4,500	3,594
Fifth Ave. (88.2)		
		4,060
Tule River (95.7)		
		2,921
Deer Creek (102.7)	4,000	
		2,793
White River (112.9)		
		2,299
Lake Wollomes (121.5)	3,500	
		1,898
Poso Creek (130.1)		
		1,893
Shafter-Wasco (137.2)		
	2,500	1,897
Kern River (151.8)		

DESIGN CAPACITY (cfs)
CALCULATED MAXIMUM
CAPACITY 2010 (cfs)
2017 ESTIMATED CAPACITY (cfs)

